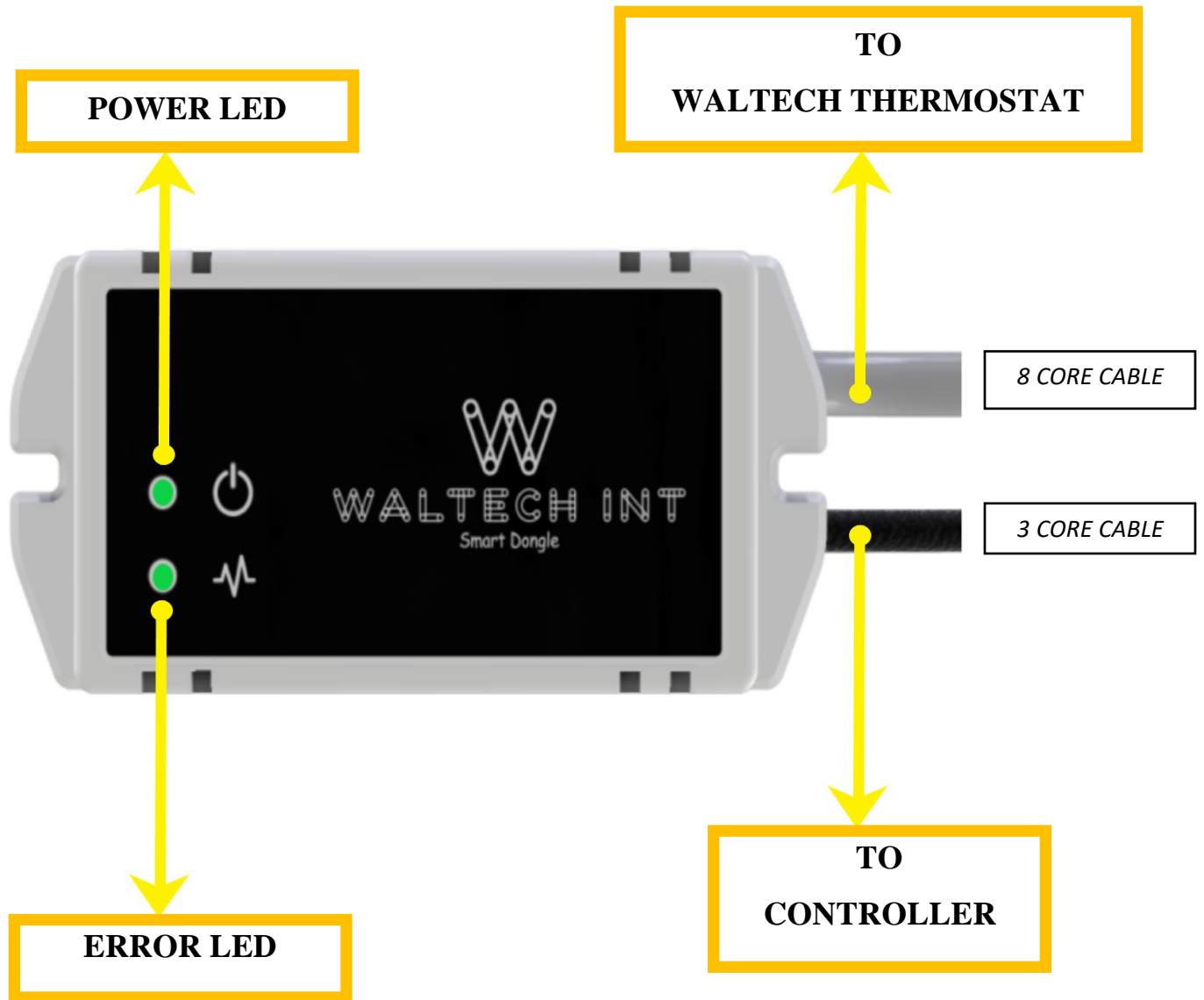


USER MANUAL

WALTECH SMART DONGLE

DEVICE APPEARANCE



DEVICE OPERATION

1) POWER LED

- Power Led turns ON, when the device is turned ON.
- This LED operates full time.

2) ERROR LED

- Error Led blinks in case of error.
- There are 3 different error codes :
 1. E1 (Error Led blinks once in 30 seconds)
Loss of communication with controller
 2. E5 (Error Led blinks 5 times in 30 sec.)
Freeze sensor open circuit
 3. E4 (Error Led blinks 4 times in 30 sec.)
Outdoor Temperature Sensor(only for heat Pump Model)

OVERVIEW

The Waltech Smart Dongle was designed for the Dometic 3 wire system with a AC/ Furnace/ Heat Pump/ Heat Strip and 2 speed fans.

Stage 1. The control will run the Heat Pump or Heat Strip (Room Temp. 2 points below Set Temp.)

Stage 2. The control will run the Furnace and the Heat Pump or Heat Strip will turn off. (Room Temp. 4 points below Set Temp.)

- If the user wants only the Furnace to start immediately, then a jumper should be placed between Heat 1 and Heat 2. All 8 dongle wires need to be connected to the thermostat, and the jumper is to be

removed from terminal 1-3. The Dometic fault codes will also show on the dongle.

- If the user connects this to a Dometic controller system that has a heat strip and a furnace, there is a different dongle models for Heatstrip and Heat Pump. This dongle has the capability to work on an AC and furnace system without a heat pump or heat strip.
- If the user connects the dongle to a Dometic system with Furnace and AC, with no Heat Strip or Heat Pump, the jumper between Heat 1 and Heat 2 should be installed. The operation and fault code is described the same as with the Heat Strip model.

WORKING PRINCIPLE

NOTE

1. Both Heat 1 & Heat 2 cannot be turned ON in the Controller. [Only one Heater can be turned ON]
2. In the controller, AC will not be turned ON when the heat pump or heat strip is turned ON.
3. So, we recommend the users to put Heat 1 as Heat Pump or Heat strip and Heat 2 as Furnace in WalTech Thermostat.
4. If the user has only Furnace, then we recommend to put Furnace as Heat 1 & Heat 2 in WalTech Thermostat.
5. In the controller, Heat 1 is considered as a heat pump or Heat Strip and Heat 2 is considered as a furnace.

6. The output of the controller depends on Waltech Thermostat Fan Mode, not on Heat 1 and Heat 2 selection.

Waltech Thermostat Input		Controller Output
<i>AC</i>	<i>Fan Mode</i>	
AC	Auto	AC & Corresponding Fan ON
AC	High	AC & Fan High ON
AC	Low	AC & Fan Low ON

Waltech Thermostat Input			Controller Output	
<i>Heat 1</i>	<i>Heat 2</i>	<i>Fan Mode</i>	<i>Heat 1 ON</i>	<i>Both Heat 1 and Heat 2 ON</i>
Furnace	Heat pump	Auto	All Relays off	Furnace & Corresponding Fan ON
Furnace	Heat pump	High	Heat pump & Fan High ON	Furnace & Fan High ON
Furnace	Heat pump	Low	Heat pump & Fan Low ON	Furnace & Fan Low ON

Waltech Thermostat Input			Controller Output	
<i>Heat 1</i>	<i>Heat 2</i>	<i>Fan Mode</i>	<i>Heat 1 ON</i>	<i>Both Heat 1 and Heat 2 ON</i>
Heat pump	Furnace	Auto	Heat Pump & Corresponding Fan ON	Furnace & Corresponding Fan ON
Heat pump	Furnace	High	Heat Pump & Fan High ON	Furnace & Fan High ON
Heat pump	Furnace	Low	Heat Pump & Fan Low ON	Furnace & Fan Low ON

Waltech Thermostat Input			Controller Output	
<i>Heat 1</i>	<i>Heat 2</i>	<i>Fan Mode</i>	<i>Heat 1 ON</i>	<i>Both Heat 1 and Heat 2 ON</i>
Furnace	Furnace	Auto	All Relays off	Furnace ON
Furnace	Furnace	High	Heat Pump & Fan High ON	Furnace & Fan High ON
Furnace	Furnace	Low	Heat Pump & Fan Low ON	Furnace & Fan Low ON

Waltech Thermostat Input			Controller Output	
<i>Heat 1</i>	<i>Heat 2</i>	<i>Fan Mode</i>	<i>Heat 1 ON</i>	<i>Both Heat 1 and Heat 2 ON</i>
Heat pump	Heat pump	Auto	Heat Pump & Corresponding Fan ON	Furnace & Corresponding Fan ON
Heat pump	Heat pump	High	Heat Pump & Fan High ON	Furnace & Fan High ON
Heat pump	Heat pump	Low	Heat Pump & Fan Low ON	Furnace & Fan Low ON

Waltech Thermostat Input			Controller Output	
<i>Heat 1</i>	<i>Heat 2</i>	<i>Fan Mode</i>	<i>Heat 1 ON</i>	<i>Both Heat 1 and Heat 2 ON</i>
Furnace	Heat strip	Auto	All Relays off	Furnace & Corresponding Fan ON
Furnace	Heat strip	High	Heat strip & Fan High ON	Furnace & Fan High ON
Furnace	Heat strip	Low	Heat strip & Fan Low ON	Furnace & Fan Low ON

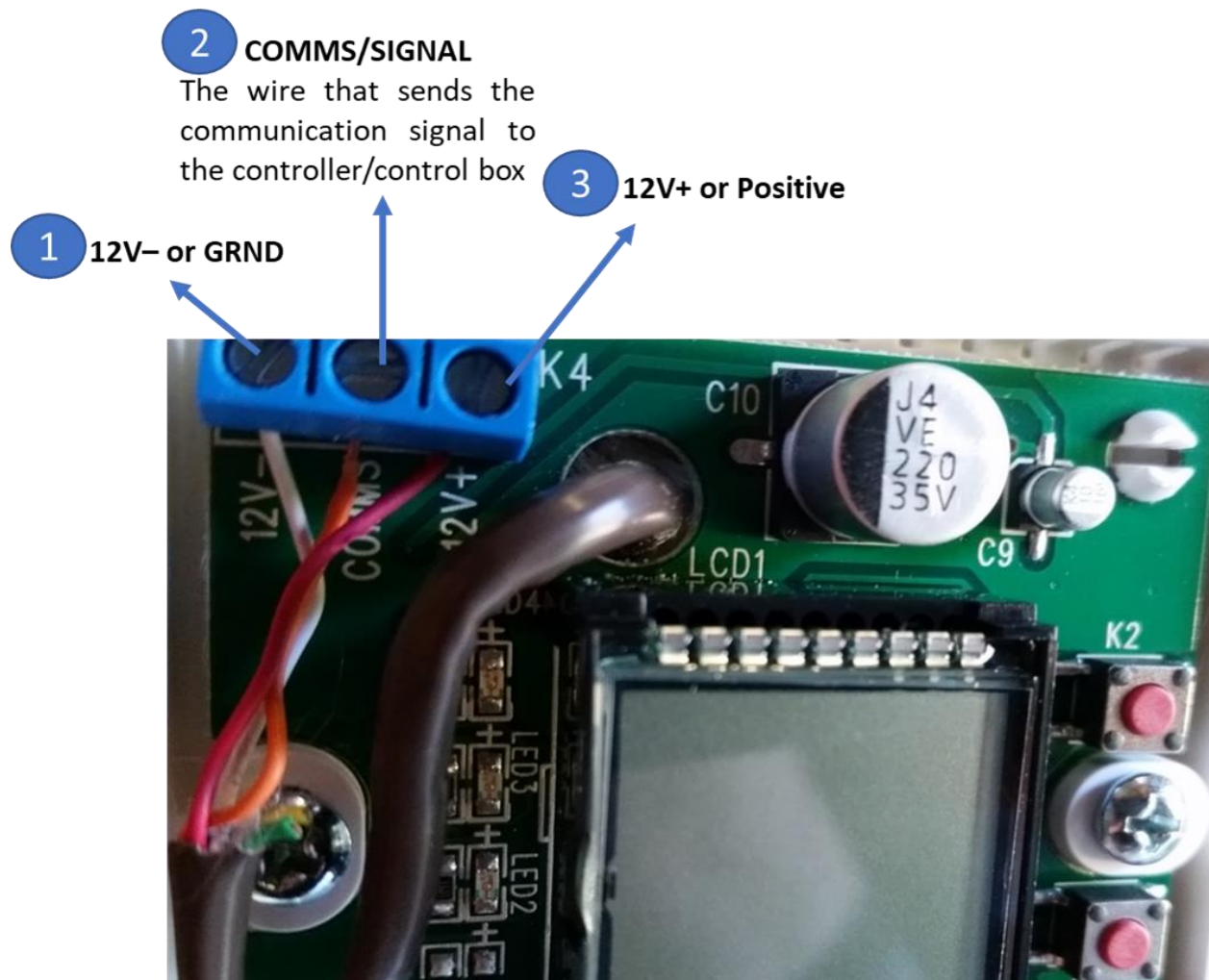
Waltech Thermostat Input			Controller Output	
<i>Heat 1</i>	<i>Heat 2</i>	<i>Fan Mode</i>	<i>Heat 1 ON</i>	<i>Both Heat 1 and Heat 2 ON</i>
Heat strip	Furnace	Auto	Heat strip & Corresponding Fan ON	Furnace & Corresponding Fan ON
Heat strip	Furnace	High	Heat strip & Fan High ON	Furnace & Fan High ON
Heat strip	Furnace	Low	Heat strip & Fan Low ON	Furnace & Fan Low ON

Waltech Thermostat Input			Controller Output	
<i>Heat 1</i>	<i>Heat 2</i>	<i>Fan Mode</i>	<i>Heat 1 ON</i>	<i>Both Heat 1 and Heat 2 ON</i>
Heat strip	Heat strip	Auto	Heat strip & Corresponding Fan ON	Furnace & Corresponding Fan ON
Heat strip	Heat strip	High	Heat strip & Fan High ON	Furnace & Fan High ON
Heat strip	Heat strip	Low	Heat strip & Fan Low ON	Furnace & Fan Low ON

WIRING DETAILS & DESCRIPTION

Before installation, we advise you to understand the basic wiring principle of your existing Dometic 3-wire thermostat. If you open the thermostat cover, you will see 3 wires connected to the thermostat. These wires are connected from the controller of your RV to the thermostat as shown in the picture below.

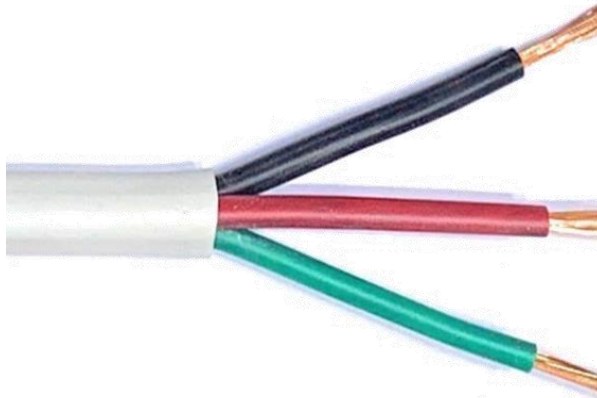
- Please tag the wires based on their function when you disconnect them before installation.



- WalTech Smart dongle has two wire outputs; one is eight wire side, and another a three-wire side.

- These three wires from the controller should be connected to the three-wire side of the smart dongle, as shown in the picture below

3 wire side of Smart Dongle



1 12V- or GRND

Connect the **black wire** to 12V- DC from the controller.

3 12V+ or Positive

Connect the **red wire** to 12V+ DC from the controller.

2 COMMS/SIGNAL

Connect the **green wire** to the communication wire from the controller. **SIGNAL/SENSE/COMMS**

8 wire side of Smart Dongle

- The eight-wire side should be connected to the Waltech Thermostat, as shown in the pic below. Please also ensure that the wall bracket is inserted before the wiring is done.

